



Model EPWPFF

How to install, operate and
maintain your
Premium Main Faucet
Water Filtration System

PRODUCT REGISTRATION AND WARRANTY EXTENSION

Please register your product on
www.ecopure.com

See warranty page for
extended warranty details.



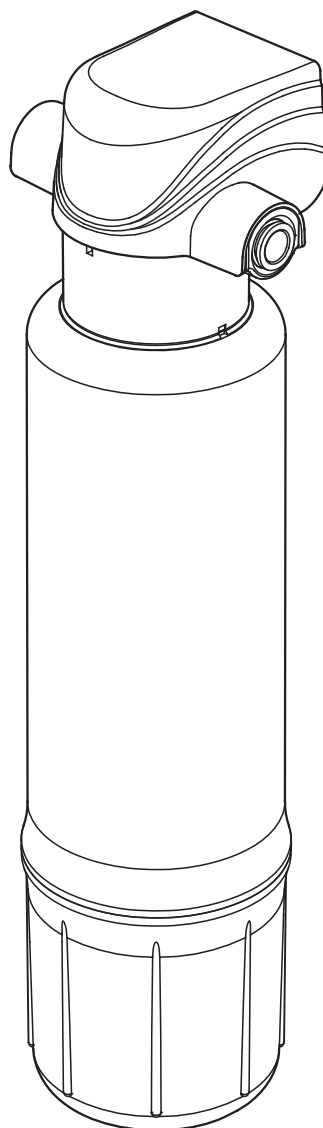
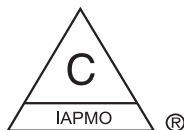
If you have any questions or concerns when
installing, operating or maintaining your water
filtration system, call our toll free number:

1-800-693-1138

or visit **www.ecopure.com**

When you call, please be prepared to provide
the model number and date code of
your product, found inside the top cover.

System certified by IAPMO R&T to
NSF/ANSI Standards 42, 53 and 401
for the reduction of claims specified in the
performance data on pages 10-12.
System certified to NSF/ANSI/CAN 372
and CSA B483.1.



Installation and Operation Manual

Manufactured and warranted by
Water Channel Partners
2805 Dodd Road, Suite 300
Eagan, MN 55121

201-8404558 (Rev. F 5/29/25)

TABLE OF CONTENTS

	<u>Page</u>
Before You Start	3
Specifications & Dimensions	3
Parts & Tools	4
Typical Undersink Installation	4
Installation Instructions	5-6
Step A - Install Water Supply Fittings	5
Step B - Make Tubing Connections	5-6
Step C - Turn On Water, Check for Leaks and Rinse Carbon Fines	6
Filter Cartridges	7
Filter Cartridge Life	7
Filter Cartridge Replacement	7
Troubleshooting the System	8
Exploded View & Parts List	8
Warranty	9
Performance Data	10-12

Before You Start

- ▼ **Read all steps and guides carefully before installing and using your premium main faucet water filtration system.** Follow all steps exactly to correctly install. Reading this manual will also help you to get all the benefits from the filtration system.
- ▼ **Do not use with water that is microbiologically unsafe or of unknown quality without adequate disinfection before or after the system.** This system is certified for cyst reduction and may be used on disinfected waters that may contain filterable cysts.
- ▼ **All plumbing should be done in accordance with local codes and requirements.** In Massachusetts, plumbing code 248 CMR 3.00 and 10.00 shall be adhered to. Consult with your licensed plumber.
- ▼ **The premium main faucet water filtration system works on water pressures of 30 psi (minimum) to 100 psi (maximum).** If your house water pressure is over the maximum, install a pressure reducing valve in the water supply pipe to the filtration system.
- ▼ **Do not install the filtration system outside, or in extreme hot or cold temperatures.** Temperature of the water supply to the filtration system must be between 40°F and 100°F. Do not install on hot water.

Specifications & Dimensions

Supply Water Pressure Min. - Max.	30 - 100 psi (207 - 689 kPa)
Supply Water Temperature Min. - Max.	40 - 100 °F (4 - 38 °C)
Rated Service Flow	2.2 gallons per minute (8.3 liters per minute)
Inlet - Outlet	3/8" quick connect fittings and tubing included

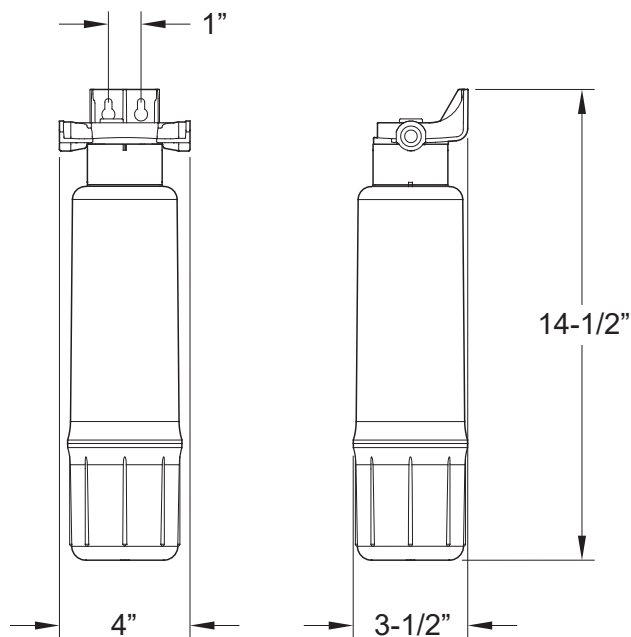


FIG. 1

Questions? Call Toll Free 1-800-693-1138 or visit **www.ecopure.com**

When you call, please be prepared to provide the model number and date code, found inside the top cover.

Parts & Tools

Included:

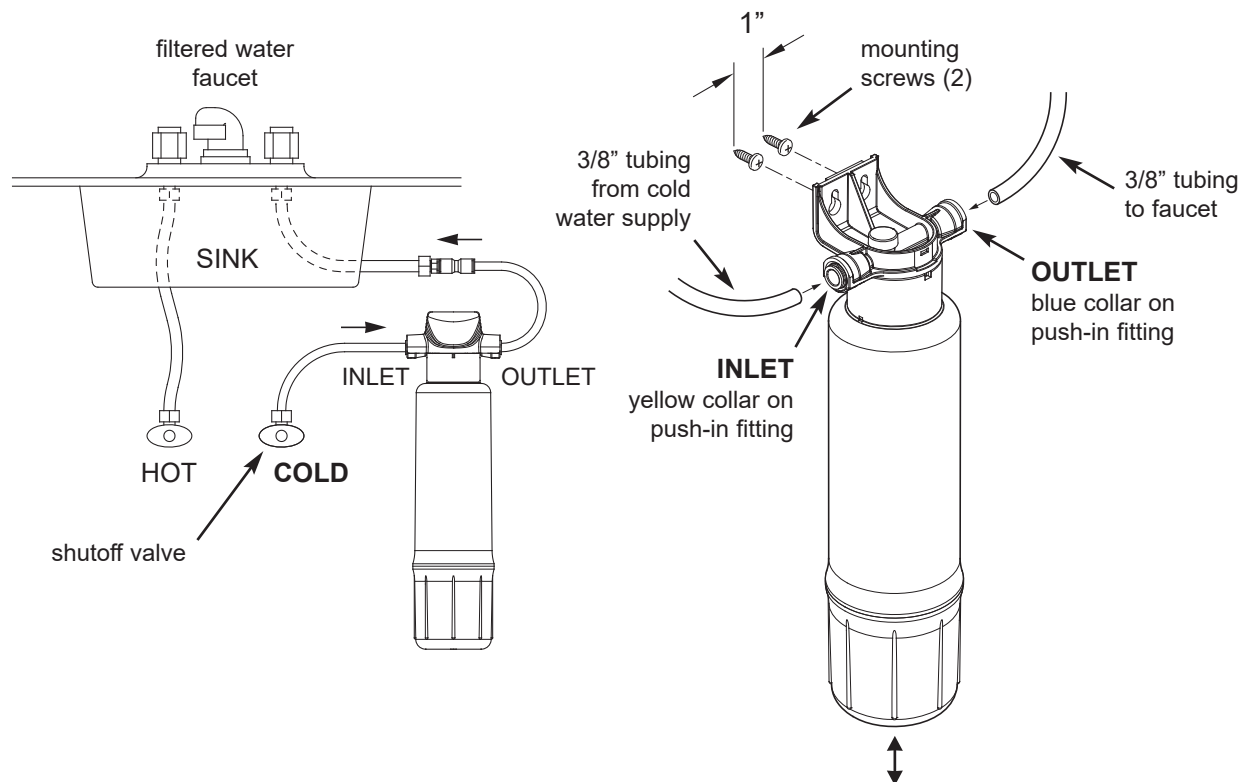
- Filter head / bracket
- Top cover
- Filter cartridge
- Tubing
- Bag containing installation parts and mounting screws

Not Included:

- Slotted and Phillips screwdrivers
- Pliers and adjustable jaw wrench
- Tubing cutter
- Electric drill
- Thread sealing tape

Typical Undersink Installation

Locate the water filter housing on the cold water supply pipe, under the sink, to filter the cold water. Refer to the following drawing.



NOTE: Be sure to allow a minimum space of 1-1/2" under the system for removing the filter cartridge to change it.

FIG. 2

Installation Instructions

Step A - Install Water Supply Fittings

Check and **comply with local plumbing codes** as you plan, then install the fittings to connect the water filtration system into the sink's cold water supply line. Fittings (9/16-24 thread) and 3/8" O.D. tubing are included to provide connections to and from the water filtration system's inlet and outlet. A typical connection using the included water supply fittings is shown in Figure 3.

1. **Close the sink's water shut off valve(s)**, or another shut off valve upstream from where you will install the filter, **and open faucets** to relieve pressure from the sink's cold water supply line.
2. Locate the line connecting the cold water shutoff to the sink faucet. Typically this line will be a flexible hose. Disconnect the nut that connects this line to the cold water shutoff. Use a bucket to catch water that drains from this line.
3. Locate one piece of the supplied 3/8" tubing, plus the supplied compression nut, ferrule and tubing insert (See Fig. 3). Assemble the parts onto the tube, as shown in Figure 3, and thread the compression nut onto the cold water shutoff. Tighten to provide a leak-tight connection.
4. Locate the water supply adaptor (supplied) and install it into the nut on the supply line which you disconnected in Step 2. Refer to Figure 3.
5. Press the stem of the water supply adaptor into one end of the supplied union connector (See Figure 3). Be sure to push the stem all the way in.

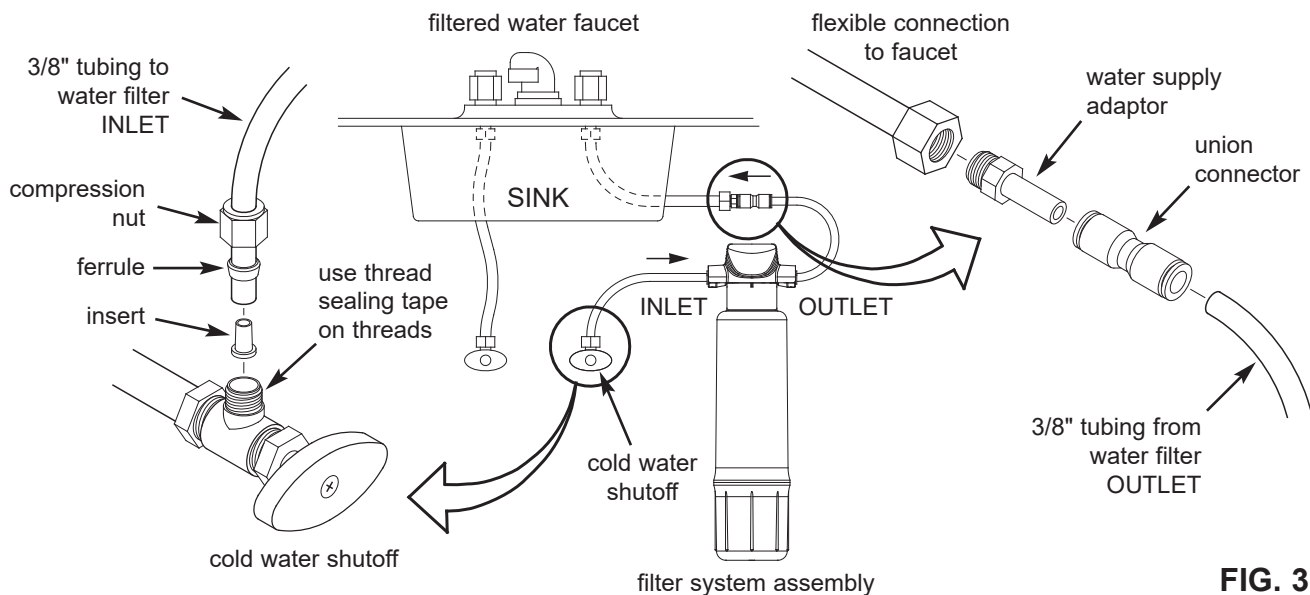


FIG. 3

Step B - Make Tubing Connections

1. Locate the piece of supplied 3/8" tubing not used previously. Route it between the union connector and the filter system outlet (See Figures 2 & 3). Allowing some slack, measure and cut to length. Cut the ends of the tubing square.
2. Insert tubing all the way into the union connector and filter system outlet. Pull on the tubing to be sure that it's held firmly in the fittings.
3. Repeat steps 1 and 2 to connect the tube installed on the cold water shutoff to the filter system inlet.

Tubing Connection (all push-in fitting locations):

This system includes push-in fittings for quick tubing connections. When working with the fittings, do the following.

continued on the next page

Installation Instructions

continued from the previous page

Connect Tubing:

1. Use a tube cutter to cut the end of tubing square.
2. Inspect the end (about 1") of the tubing to be sure there are no nicks, scratches or other rough spots. If needed cut the tubing again.
3. Push tubing through the collet and all the way into fitting. Full engagement is 3/4" length of tube into the fitting.

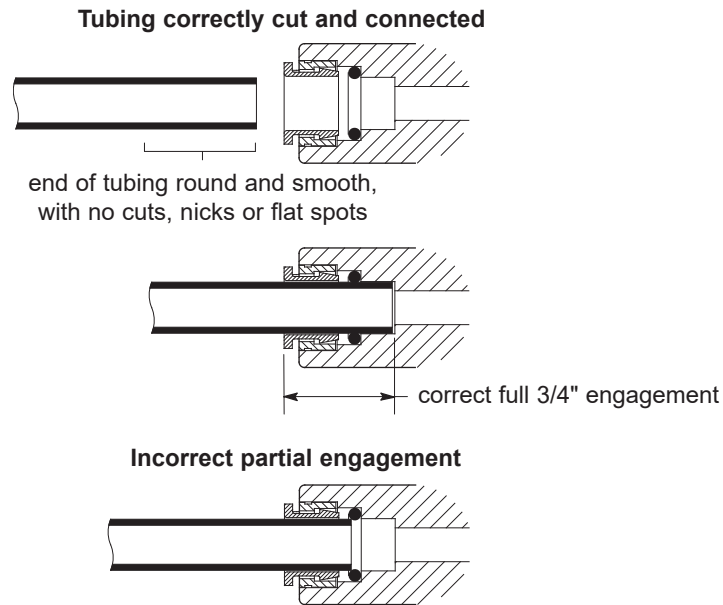


FIG. 4

To Disconnect Tubing:

1. Push the collet inward and hold with a finger while pulling the tubing out.

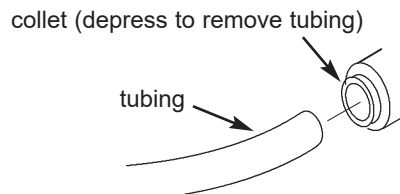


FIG. 5

Step C - Turn On Water, Check for Leaks and Rinse Carbon Fines

1. Open the shutoff valve(s) that you closed at the beginning of this installation.
2. Open the filtered water faucet to purge air from the system. When the water runs smooth, with no bubbles or spurting, close faucet and check installation for leaks.
3. Open the filtered water faucet and let water run for 20 minutes to rinse out carbon fines.

Filter Cartridges

Filter Cartridge Life

Filter Cartridges: A filter cartridge contains activated carbon. When new, open the filtered water faucet and allow fine, carbon particles to purge from the cartridge. Flush for 20 minutes. It is recommended to **replace filter cartridge every six months** of use. There are several variables that determine how long a cartridge will last. These include:

1. How much water you use, and
2. How much sediment, taste and/or odor, or other unwanted substance, is in the water.

Use the following information as a guide. However, no matter which type of cartridge you are using, you will know it is time to replace them when you first notice the return of the unwanted sediment, taste and/or odor in your water, or when the flow diminishes or stops.

EcoPure Premium Main Faucet Water Filtration System model EPWPFF with replacement element EPWPRF conforms to NSF/ANSI 42, 53 and 401 for the specific performance claims as verified and substantiated by test data. The rated capacity for this system is 660 gallons (2,500 liters) at a rated service flow of 2.2 gallons per minute (8.3 liters per minute).

**Register for reminders to change filters at
www.ecopure.com**

Filter Cartridge Replacement

NOTE: There is no need to shut off the water supply when replacing the filter cartridge.

1. Turn filter cartridge to the left to remove cartridge from the filter head.
2. Dispose of the cartridge in a proper manner.
3. Install new cartridge. Turn cartridge to the right to re-attach to the filter head.

Filter Cartridges: Filter cartridges contain activated carbon, a black powder. When new, open the filtered water faucet and allow fine, carbon particles to purge from the cartridge. Flush for 20 minutes.

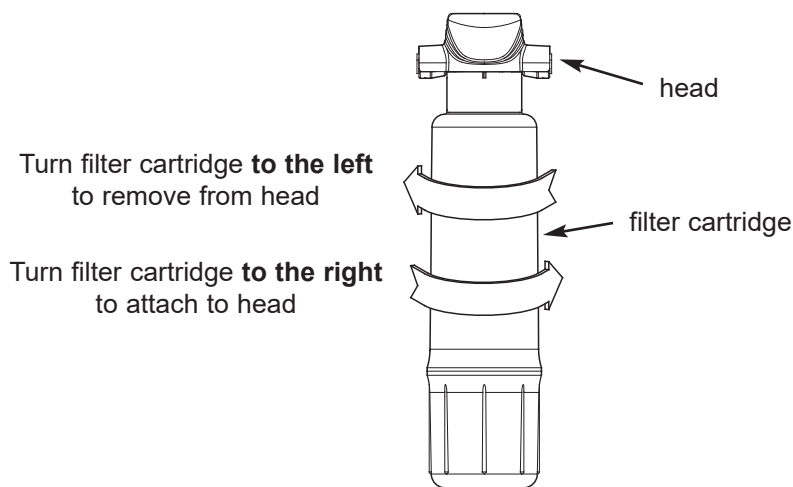


FIG. 6

Questions? Call Toll Free 1-800-693-1138 or visit **www.ecopure.com**

When you call, please be prepared to provide the model number and date code, found inside the top cover.

Troubleshooting the System

Problem: Taste and/or Odor.

Cause: Filter cartridge exhausted.

Correction: Replace filter cartridge.

Cause: System contaminated.

Correction: Sanitize system. Call 1-800-693-1138 for instructions.

Problem: Water leaks at push connect fittings.

Cause: Tubing not pushed in all the way.

Correction: Push tubing in all the way into fittings.

Cause: Tubing not cut square.

Correction: Cut tubing square.

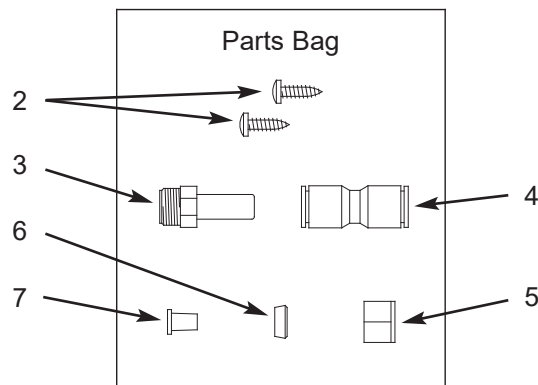
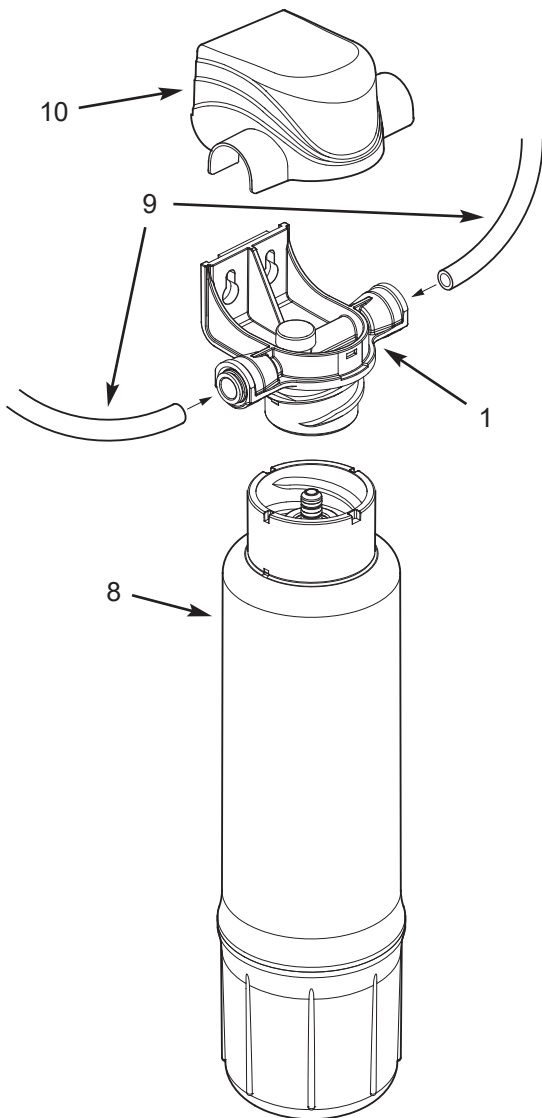
Cause: Tubing nicked.

Correction: Remove nicked portion, reinsert tubing into fitting.

Cause: Outer tubing surface not smooth.

Correction: Remove rough portion, reinsert tubing into fitting.

Parts List



Key No.	Part No.	Description
1	1042-45-HA	Head Assembly with Quick Connect Fittings
–	1042-45-AC	Parts Bag (includes Key Nos. 2-7)
2	↑	Mounting Screws (2)
3	↑	Water Supply Adaptor
4	↑	Union Connector, 3/8" to 3/8"
5	↑	Compression Nut, 3/8"
6	↑	Ferrule, Plastic, 3/8"
7	↑	Tubing Insert, 3/8"
8	EPWPRF	Repl. Filter Cartridge, Taste & Odor *
9	7168435	Tubing, 3/8" OD x 72" long, White
10	1128-13-01	Top Cover

* Please purchase replacement cartridges from the retailer where you bought your water filtration system.

Manufactured and warranted by
Water Channel Partners
2805 Dodd Road, Suite 300
Eagan, MN 55121

To order repair parts call toll free 1-800-693-1138.

EXTEND YOUR WARRANTY:

You can turn your water filtration system's one year factory warranty into a lifetime warranty by saving your receipts for purchases of EcoPure replacement filter cartridges. See "Lifetime Warranty" below for details.

WARRANTY

PREMIUM MAIN FAUCET WATER FILTRATION SYSTEM - MODEL EPWPFF (not including filter cartridges)

Warrantor: Water Channel Partners, 2805 Dodd Road, Suite 300, Eagan, MN 55121

One Year Warranty:

Warrantor guarantees, to the original purchaser when the product is purchased from an authorized dealer, and when installed and maintained in accordance with the instructions, that the Premium Main Faucet Water Filtration System (EPWPFF) will be free from defects in materials and workmanship and will perform in accordance with its written specifications for a period of one (1) year from the date the product is delivered.

Lifetime Warranty:

Warrantor guarantees, to the original purchaser only, that the Premium Main Faucet Water Filtration System (EPWPFF) will be free from defects in materials and workmanship and will perform in accordance with its written specifications for the lifetime of the purchaser, provided that:

- The product is purchased from an authorized dealer.
- The system is installed and maintained in accordance with the instructions in the same home where it was originally installed.
- The purchaser replaces the filter every six (6) months and saves their receipts, for proof of purchase of the EcoPure EPWPRF filter cartridge, in case a warranty claim is made. Purchase of no more than two (2) EPWPRF filter cartridges in a 12 month period may be applied toward compliance with this warranty.

Failure to adhere to the above requirements from the date the product is delivered voids the lifetime warranty.

If, during such respective period, a part proves, after inspection, to be defective, Warrantor will, at its sole option, either replace or repair the part without charge except normal shipping and installation charges. If a repair or replacement part is unavailable, Warrantor may refund the original purchase price. Labor to maintain the equipment is not part of the warranty. Filter cartridges, which are expendable, are not covered by the warranty.

If you have questions regarding a warranted product, need assistance with installation or troubleshooting, wish to order a part or report a warranty issue, we are just a phone call away. SIMPLY DIAL 1-800-693-1138 for assistance.

General Provisions

The above warranties are effective provided the Premium Main Faucet Water Filtration System is operated at water pressures not exceeding 100 psi (7.0 kg/cm²), and at water temperatures not exceeding 100°F (38°C); provided further that the Premium Main Faucet Water Filtration System is not subject to abuse, misuse, alteration, neglect, freezing, accident or negligence; and provided further that the Premium Main Faucet Water Filtration System is not damaged as the result of any force of nature such as, but not limited to, flood, hurricane, tornado or earthquake.

The limited warranty does not cover damage due to: (a) transportation, (b) storage, (c) improper use, (d) failure to follow the product instructions or to perform any preventive maintenance, (e) modifications, (f) unauthorized repair, (g) normal wear and tear, or (h) external causes such as accidents, abuse, or other actions or events beyond Warrantor's reasonable control. Use of aftermarket, used, or non-manufacturer provided parts will void all warranties. Warranty does not cover failures due to improper product installation. Warrantor is excused if failure to perform its warranty obligations is the result of strikes, government regulation, materials shortages, or other circumstances beyond its control.

THERE ARE NO WARRANTIES ON THE PREMIUM MAIN FAUCET WATER FILTRATION SYSTEM BEYOND THOSE SPECIFICALLY DESCRIBED ABOVE. ALL IMPLIED WARRANTIES, INCLUDING ANY IMPLIED WARRANTY OF MERCHANTABILITY OR OF FITNESS FOR A PARTICULAR PURPOSE, ARE DISCLAIMED TO THE EXTENT THEY MIGHT EXTEND BEYOND THE ABOVE PERIODS. THE SOLE OBLIGATION OF WARRANTOR UNDER THESE WARRANTIES IS TO REPLACE OR REPAIR THE COMPONENT OR PART WHICH PROVES TO BE DEFECTIVE WITHIN THE SPECIFIED TIME PERIOD, AND WARRANTOR IS NOT LIABLE FOR CONSEQUENTIAL OR INCIDENTAL DAMAGES. NO DEALER, AGENT, REPRESENTATIVE, OR OTHER PERSON IS AUTHORIZED TO EXTEND OR EXPAND THE WARRANTIES EXPRESSLY DESCRIBED ABOVE.

Some states do not allow the exclusion or limitation of incidental or consequential damages, so the above limitation or exclusion may not apply to you. This warranty gives you specific legal rights, and you may have other rights which vary from state to state. This warranty applies to consumer-owned installations only.

Performance Data

Model EPWPFF Premium Main Faucet Water Filtration System

IMPORTANT NOTICE: Read this performance data and compare the capabilities of this unit with your actual water treatment needs. It is recommended that, before purchasing a water treatment unit, you have your water supply tested to determine your actual water treatment needs. This filter system is designed to be used for the reduction of the substances listed below. Do not use where water is microbiologically unsafe or of unknown quality, without adequate disinfection before or after the system. Systems certified for cyst reduction may be used on disinfected water that may contain filterable cysts. While testing was performed under standard laboratory conditions, actual performance of this system may vary based on local water conditions. Some or all of the contaminants reduced by this unit may not be in your water supply. See elsewhere in this owner's manual for further instructions on filter cartridge replacement, system installation, operating procedures, and warranty. The maintenance instructions must be followed for the product to perform as indicated below.

General Information

This system has been tested according to NSF/ANSI 42, 53 and 401 for reduction of substances listed below. The concentration of the indicated substances in water entering the system was reduced to a concentration less than or equal to the permissible limit for water leaving the system, as specified in NSF/ANSI 42, 53 and 401. The testing was performed using spiked tap water at a flow rate of 2.2 gallons per minute (8.3 L/min.), pH of 7.5 ± 0.5 , pressure of 60 psig, and temperature of $68 \pm 5^\circ\text{F}$.

This product is protected by U.S. patent no's: 6,866,704; 6,872,311; 7,276,166; 7,296,691; 7,241,388; 7,287,650; 7,566,014; 8,056,733; applicable U.S. patent applications; foreign patents and foreign patent applications.

Installation Requirements

Pressure Range	30-100 psig (207-689 kPa)
Temperature Range	40-100°F (5-38°C)
Service Flow Rate.....	2.2 GPM (8.3 LPM)
Service Life.....	660 gallons (2,500 Liters)

Maintenance

Filter cartridges should be replaced every 660 gallons (2,500 liters) or six months, whichever comes first. Replacement filter prices will vary. Estimated cost of replacement filter cartridge EPWPRF ranges from \$70 to \$100.

The system is to be supplied only with cold water.

The system and installation shall comply with applicable state and local regulations.

Compounds certified under NSF/ANSI 401 have been deemed as 'incidental contaminants / emerging compounds.' Incidental contaminants are those compounds that have been detected in drinking water supplies at trace levels. While occurring at only trace levels, these compounds can affect the public acceptance/perception of drinking water quality.

Spent adsorption media will not be regenerated and used.

Performance Data

PERFORMANCE CLAIMS		
Substance	Required Influent Challenge Level (mg/L) ¹	Maximum Permissible Product Water Concentration (mg/L) ¹ or Reduction Requirement
Chlorine Taste & Odor	2.0 ±10%	≥50% reduction ³
Particulate, Class I (0.5 to <1 micron)	≥10,000 particles/mL	≥85% reduction ³
Microplastics (0.5 to <1 micron)	≥10,000 particles/mL	≥85% reduction ³
Asbestos	10 ⁷ to 10 ⁸ fibers/L (fibers > 10 microns in length)	99% reduction ³
Cyst	≥50,000 particles/mL	99.95% reduction ³
Lead	0.15 ±10%	0.005
Mercury	0.006 ±10%	0.002
PFOA / PFOS	0.0015 ±20%	0.00002
Substance	Required Influent Challenge Level (ng/L) ²	Maximum Permissible Product Water Concentration (ng/L) ²
Atenolol	200 ±20%	30
Bisphenol A	2,000 ±20%	300
Carbamazepine	1,400 ±20%	200
DEET	1,400 ±20%	200
Estrone	140 ±20%	20
Ibuprofen	400 ±20%	60
Linuron	140 ±20%	20
Meprobamate	400 ±20%	60
Metolachlor	1,400 ±20%	200
Naproxen	140 ±20%	20
Nonylphenol	1,400 ±20%	200
Phenyltoin	200 ±20%	30
Trimethoprim	140 ±20%	20
VOCs (by surrogate testing using chloroform)	Required Influent Challenge Level	Maximum Permissible Product Water Concentration
Alachlor	50 µg/L	1.0 µg/L
Atrazine	100 µg/L	3.0 µg/L
Benzene	81 µg/L	1.0 µg/L
Carbofuran	190 µg/L	1.0 µg/L
Carbon Tetrachloride	78 µg/L	1.8 µg/L
Chlorobenzene	77 µg/L	1.0 µg/L
Chloropicrin	15 µg/L	0.2 µg/L
2,4-D	110 µg/L	1.7 µg/L
Dibromochloropropane (DBCP)	52 µg/L	0.02 µg/L
o-Dichlorobenzene	80 µg/L	1.0 µg/L

1 Milligrams per liter, which is equivalent to parts per million (PPM).

2 Nanograms per liter, which is equivalent to parts per trillion (PPT).

3 NSF/ANSI 53 minimum percent reduction requirement. The acceptance level for this substance is based on percent reduction, rather than maximum effluent concentration.

Performance Data

VOCs (by surrogate testing using chloroform)		Required Influent Challenge Level	Maximum Permissible Product Water Concentration
p-Dichlorobenzene		40 µg/L	1.0 µg/L
1,2-Dichloroethane		88 µg/L	4.8 µg/L
1,1-Dichloroethylene		83 µg/L	1.0 µg/L
cis-1,2-Dichloroethylene		170 µg/L	0.5 µg/L
trans-1,2-Dichloroethylene		86 µg/L	1.0 µg/L
1,2-Dichloropropane		80 µg/L	1.0 µg/L
cis-1,3-Dichloropropylene		79 µg/L	1.0 µg/L
Dinoseb		170 µg/L	0.2 µg/L
Endrin		53 µg/L	0.59 µg/L
Ethylbenzene		88 µg/L	1.0 µg/L
Ethyl Dibromide (EDB)		44 µg/L	0.02 µg/L
Haloacetonitriles (HAN)	Bromochloroacetonitrile	22 µg/L	0.5 µg/L
	Dibromoacetonitrile	24 µg/L	0.6 µg/L
	Dichloroacetonitrile	9.6 µg/L	0.2 µg/L
	Trichloroacetonitrile	15 µg/L	0.3 µg/L
Haloketones (HK)	1,1-dichloro-2-propanone	7.2 µg/L	0.1 µg/L
	1,1,1-trichloro-2-propanone	8.2 µg/L	0.3 µg/L
Heptachlor		25 µg/L	0.01 µg/L
Heptachlor Epoxide		10.7 µg/L	0.2 µg/L
Hexachlorobutadiene		44 µg/L	1.0 µg/L
Hexachlorocyclopentadiene		60 µg/L	0.002 µg/L
Lindane		55 µg/L	0.01 µg/L
Methoxychlor		50 µg/L	0.1 µg/L
Pentachlorophenol		96 µg/L	1.0 µg/L
Simazine		120 µg/L	4.0 µg/L
Styrene		150 µg/L	0.5 µg/L
1,1,2,2-Tetrachloroethane		81 µg/L	1.0 µg/L
Tetrachloroethylene		81 µg/L	1.0 µg/L
Toluene		78 µg/L	1.0 µg/L
2,4,5-TP (silvex)		270 µg/L	1.6 µg/L
Tribromoacetic acid		42 µg/L	1.0 µg/L
1,2,4-Trichlorobenzene		160 µg/L	0.5 µg/L
1,1,1-Trichloroethane		84 µg/L	4.6 µg/L
1,1,2-Trichloroethane		150 µg/L	0.5 µg/L
Trichloroethylene		180 µg/L	1.0 µg/L
Chloroform (THM)		300 µg/L	15 µg/L
Bromoform (THM)			
Bromodichloromethane (THM)			
Chlorodibromomethane (THM)			
Xylenes (total)		70 µg/L	1.0 µg/L